



# METAL SHARK® BD

Metal detector for conveyor belts



## Features

- Maximum detection performance with highest reliability in the entire detection area due to 4-quadrant technology
- Stable against temperature or product changes through 3D detection
- Storage spaces for up to 250 products
- Easy to use with intuitive and multilingual menus
- Documentation of all events and metal messages
- Optional: Data transfer to USB interface or connection to the company network via SHARKNET® software
- Cyclical function monitoring with Performance Validation System (PVS)
- Available as a system solution with additional devices

## Advantages

- Reliably detects metals in packaged and unpackaged goods on conveyor belts
- Very high sensitivity in dry, moist, salty, or frozen goods
- Easy setup and intuitive operation due to auto-calibration and wizard guidance
- Maintenance-free design with automatic and continuous calibration of detector coils
- Compliant with food safety standards (IFS Food, HACCP, BRC\*)

### \*BRC-Kit

With this option, the device meets the requirements of the British Retail Consortium (BRC) Global Standard for food safety and thus also the common standards for HACCP and IFS.



# METAL SHARK® BD

Metal detector for conveyor belts



## Function

Metal detector METAL SHARK® BD is used free-standing or combined with conveyor belts or chutes. Using 3D detection technology, it detects the smallest magnetic and non-magnetic metal contaminants (iron, stainless steel, aluminum etc.) precisely and reliably even under difficult conditions.

The robust, closed stainless steel housing is easy to clean and therefore ideally suited to the food industry.



## Application

- Monitoring of packed or loose goods free or on conveyor belts or chutes
- Quality assurance for incoming goods, outgoing goods or during running production

## Industries

- Food, petfood
- Chemicals, pharmaceuticals and hygiene
- Paper, cardboard, packaging
- Textile and fleece
- Wood, recycling

## Scope of delivery

- Sensorhead BD
- Controller METAL SHARK®
- Optional: system solutions with standardized or individual conveyor belt
- Optional: individual rejection solutions possible

## Accessories & Extras:

- High temperature version
- Versions for hose cleaning (LPW) or cleaning with high-pressure cleaner (HPW) possible
- SHARKNET connection for automatic documentation according to HACCP, IFS or BRC standard
- Separate mounting of the control unit (e.g. wall mounting)
- Signalling devices (optical/acoustic)
- Performance Verification Certificate (proof of functionality for audits) by CASSEL service technicians, e.g. during commissioning or maintenance
- BRC-kit for a fail-safe system (MD failure, ejection failure, ejection box full, air pressure failure) including product jam monitor, required covers, ejection, container and compressed air monitoring, product counter etc.

**CASSEL**  
INSPECTION

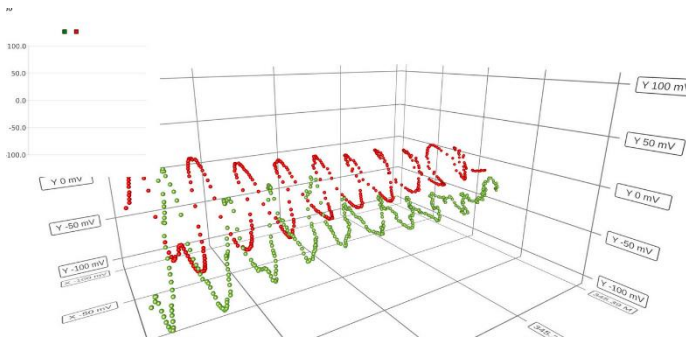


# METAL SHARK® BD

Metal detector for conveyor belts



## 3D-Detection



CASSELs unique 4-Quadrant-Technology has evolved to the 3rd dimension. The MultiPhase and BOOST FACTOR technologies add multi-phase measurement and signal amplifying factors to this established technology and thus create 3-dimensional signal models of your products signatures - as unique as a fingerprint.

## Specifications

<b>Electronics</b>	digital signal processor, noise filter, digital balance control, digital frequency control, PowerDrive circuit
<b>Input Signal</b>	8 freely configurable 24 V DC signals, e.g. for reject confirmation or conveyor belt control
<b>Output Signal</b>	2 potential-free: "Error" and „Metal“; 8 freely configurable 24 V DC signals, e.g. for optic/acoustic alarm or start conveyor belt
<b>Measuring Method</b>	inductive, multi channel operation, balanced receiver coils
<b>Metal Detection</b>	ferrous, non-ferrous (e.g. aluminium or copper) und stainless steel
<b>Product Compensation</b>	250 storage spaces, compensation performed automatically, with Teach-Assistant
<b>Protection Type</b>	IP65, optional IP66 or IP67
<b>Ambience</b>	standard: -10° C to +40° C, rel. humidity 30% up to 80% (non condensing) optional: -40° C or +55° C
<b>Product Temperature</b>	standard: -30° C to +40° C optional: -40° C to +60° C
<b>Power Supply</b>	One phase I 10-240 VAC, 50/60 Hz, typ. consumption 20 W (max. 60 W)
<b>Interface</b>	RS232, provides documentation according to HACCP- and IFS-standard, USB- or ethernet option
<b>Maintenance</b>	maintenance-free, selfcalibrating sensors
<b>Diagnosis</b>	integrated diagnostic software, automatic self-test

### BOOST FACTOR:

Up to 50% more accuracy -SHARK detects stain-less steel up to 1 mm smaller compared to conventional detectors.

### MultiPhase:

Continuous adjustment to changing conditions for even more stability.

The METAL SHARK® can easily cope with frozen or heated products, changing product orientations or temperatures as well as cooled, heated or humid environments.





# METAL SHARK® BD

Metal detector for conveyor belts



## Customizing

The METAL SHARK® BD metal detector can be individually adapted to the requirements of your products, production lines or hygiene requirements. Increased documentation requirements can be handled via the SHARKNET®.

If you need to ensure certain sensitivities, send us samples of your products and we will adapt the device perfectly to your requirements.

## Special Designs & Extras

<b>3D Detection</b>	Additional light barriers and update of the control software (BOOST factor) enable an exact signal evaluation over the detection period of each individual product (MultiPhase).
<b>Multifrequency</b>	Use of 4 different frequencies significantly increases the stability against product variations (density, position, temperature, etc.)
<b>Temperature extension cold</b>	Temperature range extended to -40°C, cold-elastic grouting material, insulation, switch cabinet heating and other measures
<b>Temperature extension hot</b>	Temperature range extended to +55° C, Adaptation of control cabinet, additional thermal insulation, replacement of filter fan, heat exchanger and/or active cooling units
<b>High temperature extension for product</b>	Product temperature up to max. +120°C, with this option, the sensor has protection class IP54
<b>LPW/HPW</b>	Increase of the IP protection class by adapting the sensor seal, installing additional seals and a double housing for the control electronics
<b>SHARKNET®</b>	The SHARKNET®-2 software networks METAL SHARK® metal detectors, checkweighers and x-rays with a central computer and offers central storage of all operating data as well as batch and alarm documentation for HACCP and IFS conformity.
<b>UltraSens version</b>	Fast Power Drive (FPD) significantly improves metal detection and reliability in industrial environments that do not meet electromagnetic compatibility standards, with various IP protection ratings possible.
<b>Twinhead design</b>	Special version for the detection of difficult contaminants: Magnetic chips can, for example, align themselves on the conveyor belt so that they run perfectly parallel to the magnetic field and thus remain undetected. Two magnetic fields offset against each other ensure metal detection even in such cases.

**CASSEL Inspection US**  
 2440 W Corporate Preserve Drive, Ste. 600  
 Oak Creek, WI 53154  
 USA  
**Phone:** +1-414-574-4220  
**Email:** us.sales@cassel-inspection.com,  
 us.service@cassel-inspection.com  
**Website:** www.cassel-inspection.com

**CASSEL Messtechnik GmbH**  
 In der Dehne 10  
 37127 Dransfeld  
 Germany  
**Phone:** +49 (0) 5502 91150  
**Fax:** +49 (0) 5502 911532  
**Email:** info@cassel-inspection.com  
**Website:** www.cassel-inspection.com

**CASSEL**  
 INSPECTION