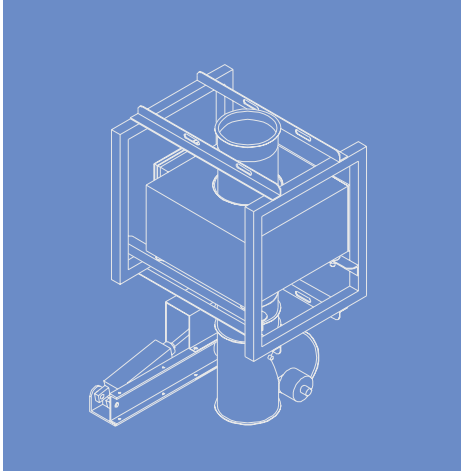


METAL SHARK® GF

Free falling powder and bulk products
Pipe Ø 100-600 mm / 4-24 inch



METAL SHARK® - The new generation in metal detecting technology

Introducing the METAL SHARK® presenting a completely new design in high sensitivity metal detectors. The METAL SHARK® provides outstanding sensitivity, accuracy, stability and precision product-effect-compensation.

The METAL SHARK® features the latest four channel DDS (direct digital synthesizer) and DSP (digital signal processor) technology. These technologies provide outstanding product-effect compensation. High processing speed, DDS and DSP makes the METAL SHARK® the leader in digital metal detection.

Digital balance control - levels temperature and humidity influences.

Auto calibration - fast and easy set-up.

Digital frequency & phase control avoid any drifts. Once calibrated keeps the set-up forever. No need for re-calibration.

Digital noise filters eliminate undesirable signals such as vibrations and shocks.

Multi-channel technology for the optimum recognition of all metals; ferrous, non-ferrous and stainless.

Power supply: Wide input 85-265 V AC works great even with unstable and poor power sources.

Automatic diagnostics - possible functional defects of the device are displayed on a separate output contact.



METAL SHARK® GF

Typically, the GF types are used in gravity feed pipes and provide highest performance in detecting magnetic and non-magnetic metals. The bulk material falls through the metal detector. With the reject flap EX-S smallest metal objects are separated out of the product stream promptly.

With a maintenance free design and high quality construction, for reliable operation in the most challenging industrial environments.



Easy handling

In practical use, settings of metal detectors often need to be checked quickly and reliably during production. Cassel attached great importance to user-friendliness: The software is self-explanatory: An interface-manager leads the user step by step through the menus that have to be adjusted. Example: Product teach is done with one-button-push.

Intuitive operation

The display shows only the information that is really required. Reduction to the essential makes operation clear and transparent.

Product library

The characteristics of 50 different products can be stored and recalled here.

Auto calibration

Provides simple and quick learning of product characteristics for product effect compensation. Pre-set product properties for DRY, WET, FROZEN, VIBRATION and SHOCK makes new product setting exceptionally easy and reliable.

Operation History

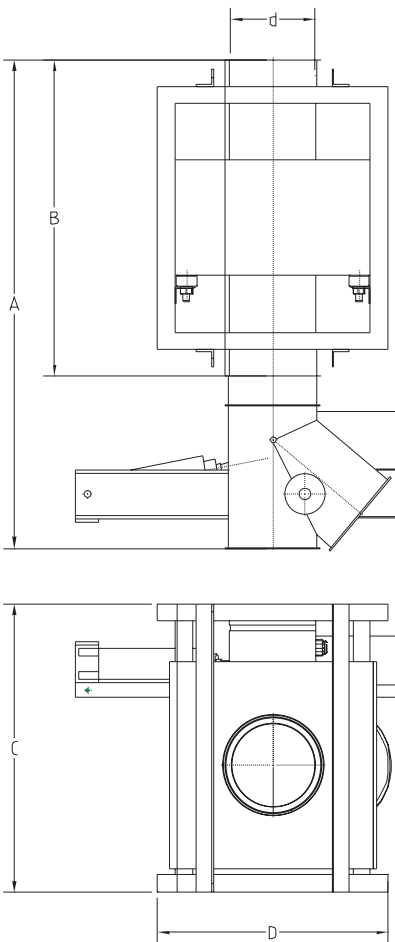
Events such as metal detections or parameter settings are stored in a log list, including date and time and can be read on the display or exported via serial or ethernet link.

Performance validation

According to HACCP the metal detector is a critical control point and therefore has to be checked regularly. Optional check&catch gates in the pipeline allow to test the detector function regularly and easily. To this aim a metal embedded into a plastic ball is pushed through the pipe. Removable stainless steel grids in the accept and reject pipes allow the test metal to be easily recovered. The performance validation automatically prompts the operator to test the performance of the Metal Shark at pre-set intervals.

High pressure washdown option

The Shark electronics is installed inside a second SS enclosure. The aperture opening is longterm sealed and protected. The unit is suitable for daily steam-hose cleaning with max. 1000 psi. Sensor head and control unit exceed Ip67 (Nema 4x).



ø d	ø d (mm)	A	B	C	D	A (mm)	B (mm)	C (mm)	D (mm)	TYPICAL MATERIAL FLOW cu ft/hr	TYPICAL MATERIAL FLOW l/h	APPROXIMATE SENSITIVITY ømm		
												FE	Al	SS
4"	100	23,6"	15,8"	17,7"	12,5"	600	400	450	318	700	20000	0,5	0,7	0,8
5"	120	28,4"	19,3"	17,7"	13,3"	720	490	450	338	1000	28000	0,7	0,9	1,0
6"	150	33,5"	21,7"	19,8"	15,8"	850	550	502	400	1500	43000	0,8	1,1	1,3
8"	200	47,2"	31,1"	24,2"	20"	1200	790	615	508	2600	74000	1,2	1,6	1,8
10"	250	54,9"	36,8"	31,5"	26"	1395	935	800	685	4000	115000	1,5	2,0	2,3
12"	300	63,2"	43,3"	37"	31,5"	1605	1100	940	800	5800	165000	1,9	2,4	3,0
14"	350	76,2"	49,8"	40,2"	34,7"	1935	1265	1020	880	7900	225000	2,2	2,7	3,3
16"	400	82,7"	53,2"	42,9"	37,4"	2100	1350	1090	950	10300	290000	2,4	2,9	3,6
20"	500		59,1"	48,8"	43,3"		1500	1240	1100	16200	460000	2,8	3,5	4,2
24"	600		63"	54,5"	50,6"		1600	1385	1286	23200	656000	4,6	5,8	6,9

Head Quarters:
Cassel Messtechnik GmbH
In der Dehne 10
37127 Dransfeld, Germany
Tel. ++49-5502-91150
Fax ++49-5502-911532
www.cassel.de info@cassel.de

Local agency:

CASSEL
METAL SHARK
CE www.cassel.de